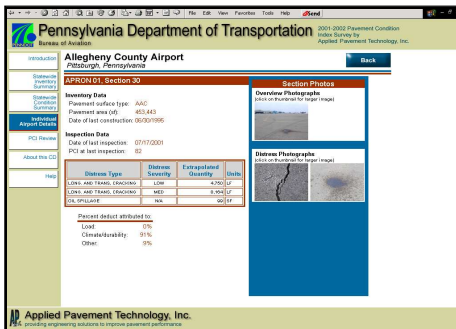


Pennsylvania Statewide Airport Pavement Management System



Recognizing the significance of its pavement infrastructure, the Pennsylvania Bureau of Aviation (Bureau) retained Applied Pavement Technology, Inc. (APTech) to implement a statewide airport pavement management system (APMS) in 1998. The ultimate goal of this project was to provide the airports, the state, and the Federal Aviation Administration (FAA) with the pavement information and analytical tools to help them identify their needs, optimize the selection of projects and treatments over a multi-year period, and evaluate the long-term impacts of their project priorities. Due to the agency's satisfaction with the APMS implementation, APTech was retained again in 2005 and in 2008 to reevaluate the pavement conditions and to update the pavement management system.

During these projects, APTech inspected the pavements at ninety-seven public-use airports and heliports in Pennsylvania, ranging in size from Harrisburg International Airport to Ridge Soaring Gliderport. In addition to assessing current pavement conditions throughout the airport system, APTech developed recommendations, a schedule, and an estimated budget for the pavement-related maintenance and rehabilitation work for the system. Extensive training on the use of the MicroPAVER software was another key component of the Bureau's pavement management activities. Representatives of the Bureau, individual Pennsylvania Department of Transportation staff members, and employees of the FAA were included in the training process.

A very important part of this project was the dissemination of the pavement information to the FAA, the Legislature, the individual airports, and airport consultants. The Bureau did not want to rely only on traditional paper reports to communicate this information. APTech's multimedia presentation tool allowed the Bureau to convey pavement-related information to people with and without technical backgrounds, either via an interactive CD or through the Bureau's website. It presents instant access to the most commonly requested pavement management information – such as pavement condition index data, distress photographs, and maintenance and rehabilitation options – without requiring the user to obtain and operate the pavement management system. The APMS allowed the Bureau to determine the ability of the current aviation system to meet transportation and economic objectives as they relate to the pavement infrastructure on a statewide basis.